



KODIAK CONTROLS



MODEL 'KC301L', LIQUID FILLED GAUGES

Our '300' Series Gauge Line Is A High Quality Line Of Liquid Filled Gauges. The Glycerine Filling Helps Dampen The Effects Of Pulsation And Vibration, While Also Perpetually Lubricating The Movement (And Keeping Contaminates Such As Dirt Away From All Moving Parts) Which Will Extend The Life Of The Gauge.

This Gauge Has Been Specifically Designed With The Original Equipment Manufacturers In Mind And Are Typically Used On Hydraulic & Pneumatic Systems As Well As Any Commercial Or Industrial Application Not Corrosive To 316LSS Wetted Parts Where Glycerine Filling Is Suitable For Use.

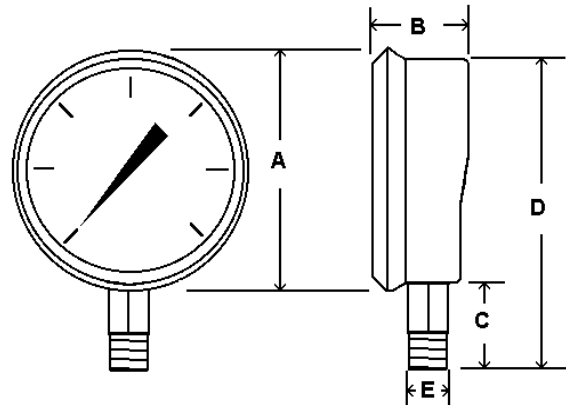
SPECIFICATIONS:

- Available Dial Sizes: 2 1/2", 4", 6"
- Available Connection Sizes:
1/4"MNPT on 2", 2 1/2" and 4"
1/2"MNPT on 4" and 6"
- Stainless Steel Case And Bezel
- SS Internals
- 316 SS Bourdon Tube & Connection
- Built in Snubber (for Extra Dampening Effect)
- Liquid Filled (Dry Available)
- Accuracy : 2 1/2"Dial Size = 1.5 %
4" and 6" Dial Size = 1 %
- Dual Scale: PSI & Bar (x100=kPa)
(Single Scale available)
- Ambient temperature: FILLED: 30°F to 160°F
DRY: -30°F to 180°F



RANGE	CODE	Major In	Minor In
30/0"VAC	A	5	0.5
30/0/15	CB	5	0.5
30/0/30	CC	10	1
30/0/60	CD	10	1
30/0/100	CE	20	2
30/0/150	CF	20	2
30/0/300	CH	50	10
0/15	B	2	0.2
0/30	C	5	0.5
0/60	D	10	1
0/100	E	20	2
0/160	F	20	2
0/200	G	40	4
0/300	H	50	5
0/400	I	50	5
0/500	J	100	10
0/600	K	100	10
0/800	L	100	10
0/1000	M	200	20
0/1500	N	200	20
0/2000	O	400	50
0/3000	P	500	50
0/4000	Q	500	50
0/5000	R	1000	100
0/6000	S	2000	200
0/10,000	U	2000	200
0/15,000	V	2000	200

Some ranges not available in all dial sizes, please call with your particular application



		A	B	C	D	E
2 1/2" Dial	In	2.80	1.28	1.07	3.55	1/4"
	MM	71	33	27	90	Npt
4" Dial	In	4.32	1.63	1.25	5.57	1/4" or
	MM	110	42	32	141	1/2"npt
6" Dial	In	6.54	1.70	1.68	8.22	1/4" or
	MM	166	43	43	210	1/2"npt



KC302LFW ALL SS BACK MOUNT

Our '300' series gauge line is a high quality line of stainless steel gauges. Hermetically sealing the gauge prevents dust, dirt or other contaminants from entering the case of the gauge and attacking the movement or internals of the gauge. Keeping out such contaminants prolongs the life of the gauge.

This gauge has been specifically designed with original equipment manufacturers in mind. It is typically used in chemical processing or food processing applications as well as any commercial or industrial application where stainless steel components are required.

SPECIFICATIONS:

Available Dial Sizes: 1 1/2", 2", 2 1/2", 3 1/2", 4"

Available Connection Sizes:

1/8"MNPT on 1 1/2" and 2"

1/4"MNPT on 2", 2 1/2", 3 1/2" and 4"

Stainless Steel Case And Bezel

SS Internals & Connection

Connection Welded at Case

316SS Bourdon Tube

Liquid Filled (Dry Available)

Accuracy : 1.5 % Full Scale

(Special Accuracy Available Upon Request)

Dual Scale: PSI & Bar (x100=kPa)

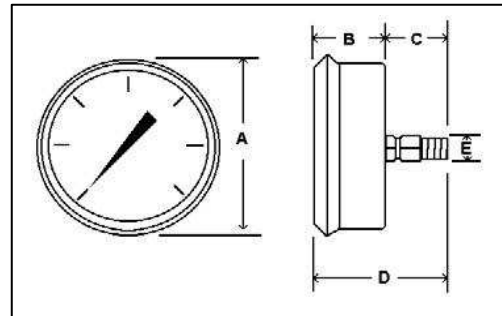
Single Scale available from stock

Ambient temperature: FILLED: 30°F to 160°F

DRY: -30°F to 180°F



RANGE	CODE	Major In	Minor In
30/0"VAC	A	5	0.5
30/0/15	CB	5	0.5
30/0/30	CC	10	1
30/0/60	CD	10	1
30/0/100	CE	20	2
30/0/150	CF	20	2
30/0/300	CH	50	10
0/15	B	2	0.2
0/30	C	5	0.5
0/60	D	10	1
0/100	E	20	2
0/160	F	20	2
0/200	G	40	5
0/300	H	50	5
0/400	I	50	5
0/600	K	100	10
0/1000	M	200	20
0/1500	N	200	20
0/2000	O	400	50
0/3000	P	500	50
0/5000	R	1000	100
0/10,000	U	1000	100
0/15,000	V	2000	200



		A	B	C	D	E	F	G
1 1/2" Dial	In	1.88	1.06	.89	1.95	1/8"	2.63	1.63
	MM	48	27	23	50	NPT	67	42
2" Dial	In	2.23	1.09	.71	1.99	1/8" OR	2.81	2.00
	MM	57	28	23	51	1/4"NPT	72	51
2 1/2" Dial	In	2.80	1.28	1.19	2.46	1/4"	3.48	2.50
	MM	71	33	30	63	NPT	88	64
3 1/2" Dial	In	3.83	1.14	1.08	2.20	1/4"	3.70	3.5
	MM	97	29	27	56	NPT	94	89
4" Dial	In	4.32	1.63	1.14	2.77	1/4"	5.20	3.87
	MM	110	42	29	71	NPT	132	98

Note:

All Dial Size Gauges are Center Back Connection Except 3 1/2" Dial Size which are Lower Back Connection



KC303LFW ALL SS PANEL MOUNT

Our '300FW' series gauge line is a high quality line of all stainless gauges. With a one piece design solid connection welded to case, this gauge is more solid and leak free than our competitors. These gauges can be supplied dry or liquid filled based upon your needs and application.

This gauge has been specifically designed with original equipment manufacturers in mind. It is typically used on chemical or food processing applications as well as any commercial or industrial application where stainless steel components are necessary.

SPECIFICATIONS:

U-Clamp Panel Mount Design

Dial Sizes: 2 1/2"

Connection Sizes: 1/4"MNPT

Stainless Steel Case And Bezel

Stainless Steel Internals & Connection

Connection Welded at Case

316SS Bourdon Tube

Liquid Filled (Dry Available)

Accuracy : 1.5 % Full Scale

(Special Accuracy Available Upon Request)

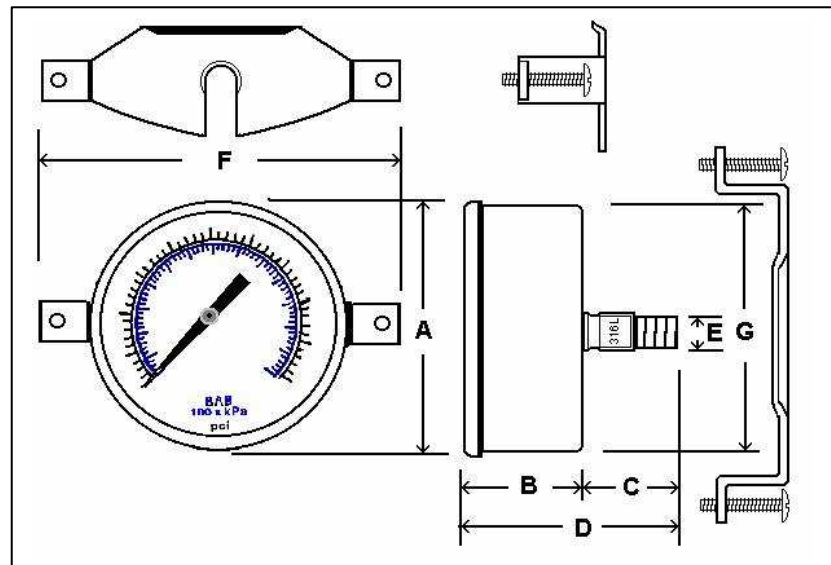
Dual Scale: PSI & Bar (x100=kPa)

Ambient temperature: FILLED: 30°F to 160°F

DRY: -30°F to 180°F



RANGE	CODE	Major In	Minor In
30/0"VAC A		5	0.5
30/0/15	CB	5	0.5
30/0/30	CC	10	1
30/0/60	CD	10	1
30/0/100	CE	20	2
30/0/150	CF	20	2
30/0/300	CH	50	10
0/15	B	2	0.2
0/30	C	5	0.5
0/60	D	10	1
0/100	E	20	2
0/160	F 20		2
0/200	G	40	5
0/300	H	50	5
0/400	I	50	5
0/600	K	100	10
0/1000	M	200	20
0/1500	N	200	20
0/2000	O	400	50
0/3000	P	500	50
0/5000	R	1000	100
0/10,000	U	1000	100
0/15,000	V	2000	200



		A	B	C	D	E	F	G
2 1/2" Dial	In	2.70	1.38	1.09	2.50	1/4" NPT	3.79	2.44
	MM	68.75	35	27.75	63.49		96.28	62



KC304LFW ALL SS PANEL MOUNT

Our '300LFW' series gauge line is a high quality line of all stainless gauges. With a one piece design solid connection welded to case, this gauge is more solid and leak free than our competitors. These gauges can be supplied dry or liquid filled based upon your needs and application.

This gauge has been specifically designed with original equipment manufacturers in mind. It is typically used on chemical or food processing applications as well as any commercial or industrial application where stainless steel components are necessary.

SPECIFICATIONS:

Front Flanged Panel Mount Design

Dial Sizes: 2 1/2"

Connection Sizes: 1/4"MNPT

Stainless Steel Case And Bezel

Stainless Steel Internals & Connection

Connection Welded at Case

316SS Bourdon Tube

Liquid Filled (Dry Available)

Accuracy : 1.5 % Full Scale

(Special Accuracy Available Upon Request)

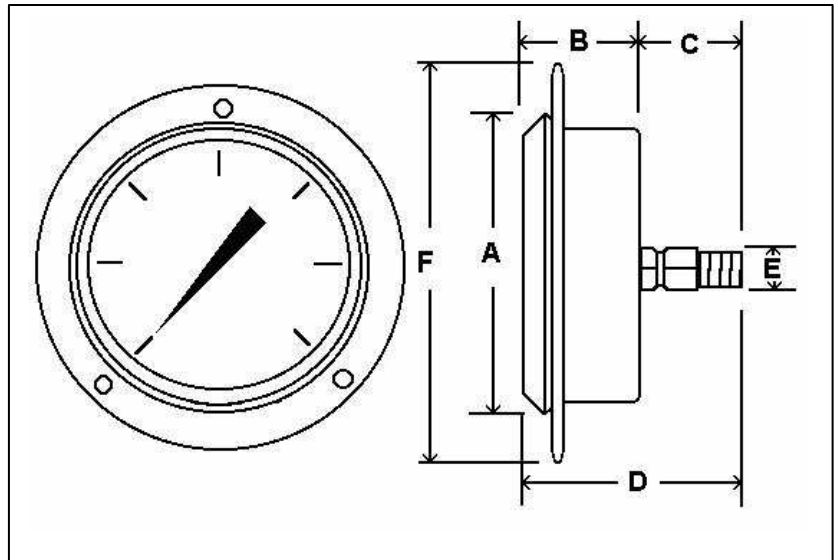
Dual Scale: PSI & Bar (x100=kPa)

Ambient temperature: FILLED: 30°F to 160°F

DRY: -30°F to 180°F



RANGE	CODE	Major In	Minor In
30/0"VAC	A	5	0.5
30/0/15	CB	5	0.5
30/0/30	CC	10	1
30/0/60	CD	10	1
30/0/100	CE	20	2
30/0/150	CF	20	2
30/0/300	CH	50	10
0/15	B	2	0.2
0/30	C	5	0.5
0/60	D	10	1
0/100	E	20	2
0/160	F	20	2
0/200	G	40	5
0/300	H	50	5
0/400	I	50	5
0/600	K	100	10
0/1000	M	200	20
0/1500	N	200	20
0/2000	O	400	50
0/3000	P	500	50
0/5000	R	1000	100
0/10,000	U	1000	100
0/15,000	V	2000	200



		A	B	C	D	E	F	G
2 1/2" Dial	In	2.80	1.28	1.19	2.46	1/4" NPT	3.48	2.50
	MM	71	33	30	63		88	64



**KODIAK
CONTROLS
INCORPORATED**

Kodiak KC4001

All Stainless Steel Gauge

SPECIFICATIONS:

DIAL: 4" Diameter

CASE: Stainless Steel

LENS: Laminated Safety Glass

POINTER: Adjustable

BOURDON TUBE: 316 Stainless Steel

SOCKET : 316 Stainless Steel Welded to Case

MOVEMENT: SS Heavy Duty Bushed
w/ Overload – Underload stops

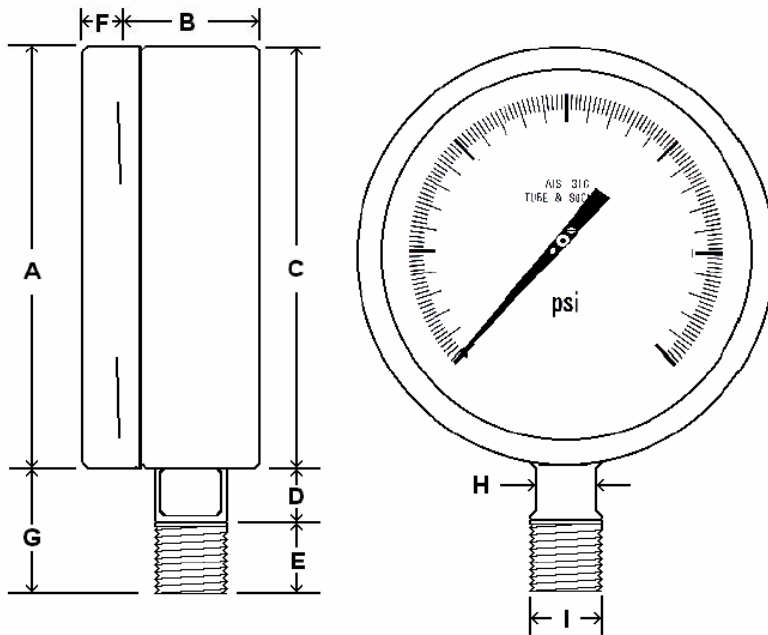
ACCURACY: 0.5% Full Scale

STANDARD FEATURES

*Hermetically Sealed/Weather Proof

*Welded Case and Connection

*Liquid Fillable / No Kit Required



	A	B	C	D	E	F	G	H	I (=NPT)
INCH	4.02	1.93	3.87	.70	.74	.66	1.38	.68	1/2" or
MM	102	49	98.5	18	19	17	35	17	1/4"

RANGE	FIGURES	MINOR
30"-0 hg vac	5"	0.2"
30"-0-15	10" & 5 psi	1" & 0.5 psi
30"-0-30	10" & 5 psi	1" & 0.5 psi
30"-0-60	10" & 10 psi	2" & 1 psi
30"-0-100	10" & 20 psi	2" & 1 psi
30"-0-150	10" & 30 psi	5" & 2 psi
30"-0-200	10" & 50 psi	5" & 2 psi
30"-0-300	10" & 50 psi	10" & 5 psi
30"-0-600	10" & 100 psi	10" & 10 psi
0-15 psi	3 psi	0.2 psi
0-30 psi	5 psi	0.2 psi
0-60 psi	5 psi	0.5 psi
0-100 psi	10 psi	1 psi
0-160 psi	20 psi	1 psi
0-200 psi	20 psi	2 psi
0-300 psi	50 psi	2 psi
0-400 psi	50 psi	2 psi
0-600 psi	50 psi	5 psi
0-800 psi	100 psi	5 psi
0-1000 psi	100 psi	10 psi
0-1500 psi	250 psi	10 psi
0-2000 psi	200 psi	20 psi
0-3000 psi	500 psi	20 psi
0-5000 psi	1,000 psi	50 psi
0-10,000 psi	1,000 psi	100 psi
0-15,000 psi	2,500 psi	100 psi
0-20,000 psi	2,000 psi	200 psi



KC314D SS PANEL MOUNT

Our '300' series gauge line is a high quality line of all stainless gauges. Hermetically sealing the gauge prevents dust, dirt or other contaminants from entering the case of the gauge and attacking the movement or internals of the gauge. Keeping out such contaminants prolongs the life of the gauge.

This gauge has been specifically designed with original equipment manufacturers in mind and are typically used on chemical or food processing applications as well as any commercial or industrial application where stainless steel components are necessary.

SPECIFICATIONS:

Front Flange Panel Mount Design

Dial Sizes: 2 1/2" or 4"

Connection Sizes: 1/4"MNPT (1/2" Available)

Stainless Steel Case

Stainless Steel Removeable Bezel

Stainless Steel Internals & Connection

316SS Bourdon Tube

Dry but Fillable

Accuracy : 1 %

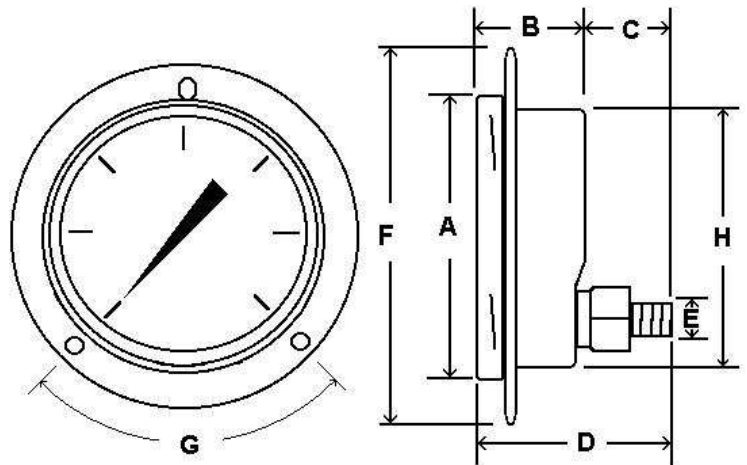
Single Scale: PSI (Dual Scale available)

Ambient temperature: FILLED: 30°F to 160°F

DRY: -30°F to 180°F



RANGE	CODE	Major In	Minor In
30/0"VAC	A	5	0.5
30/0/15	CB	5	0.5
30/0/30	CC	10	1
30/0/60	CD	10	1
30/0/100	CE	20	2
30/0/150	CF	20	2
30/0/300	CH	50	10
0/15	B	2	0.2
0/30	C	5	0.5
0/60	D	10	1
0/100	E	10	1
0/160	F	20	2
0/200	G	20	2
0/300	H	30	5
0/400	I	50	5
0/600	K	100	10
0/1000	M	200	20
0/1500	N	300	25
0/2000	O	200	20
0/3000	P	500	50
0/5000	R	500	50
0/10,000	U	1000	100
0/15,000	V	3000	250



		A	B	C	D	E	F	H
2 1/2" Dial	In	2.71	1.23	1.00	2.23	1/4" NPT	3.45	2.45
	MM	68.8	31.3	25.4	56.7		87.6	62.2
4" Dial	In	4.36	1.73	1.34	3.07	1/4" NPT	5.22	3.84
	MM	111	44	34	78		132	97

G Dimensions (Screw Holes)				
		Arc	Distance from center	Size (oblong)
2 1/2" Dial	120'	In	1.50"	.18" x .25"
		MM	38 mm	4.5 mm x 6.5 mm
4" Dial	120'	In	2.35"	.23" x .37"
		MM	60 mm	6 mm x 9 mm